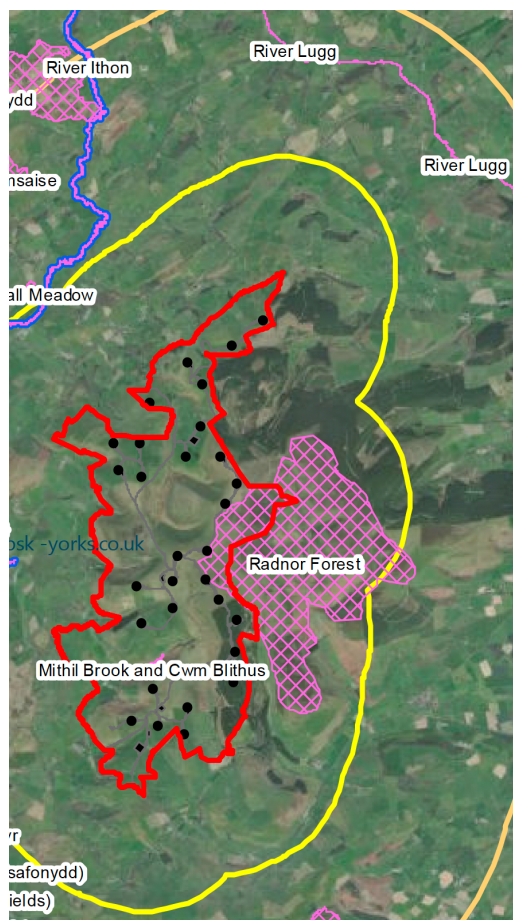




CPRW: NANT MITHIL (BUTE'S RADNOR FOREST WIND ENERGY PARK)
your *DAILY DOSE* no 8.and how to find it :

Sorry, we can't give you a precise link to today's map because the Ecology figures are no longer on Bute's website (Sunday 2nd June). They were in Chapter 7, Ecology <https://nantmithilenergypark.wales/environmental-statement/chapter-7-ecology-non-avian/> This is the plan of the Nant Mithil site in relation to protected nature sites. We have focussed on Radnor Forest SSSI. why did Bute choose a wind farm site which overlaps a protected SSSI and place 5 turbines right near its edge?



Natural Resources Wales says:

https://naturalresources.wales/media/677110/sssi_0423_sms_en001.pdf

What is 'special' about the wildlife at Radnor Forest SSSI?

Radnor Forest has several special features:

• **Upland Habitats & Species**

There are extensive areas of upland habitats at this site. Those that are considered to be of particular interest include dry heath, blanket bog and rocks supporting a variety of mosses and liverworts that are typical of less acidic conditions, including several scarce species. The site also supports some locally rare plants and a variety of typical upland breeding birds.

• **Engineering works and Development**

Major new projects, such as roads, pipelines, wind and hydropower schemes and power lines, could have a significant impact and should be carefully assessed in accordance with environmental regulations. Wind turbines may present a collision risk to birds of prey and may cause disturbance to breeding birds.

The red line is the Nant Mithil Energy Park site boundary
The yellow line is the 2km buffer zone from the site boundary
The pink hatched area is Radnor Forest protected **Site of Special Scientific Interest (SSSI)**